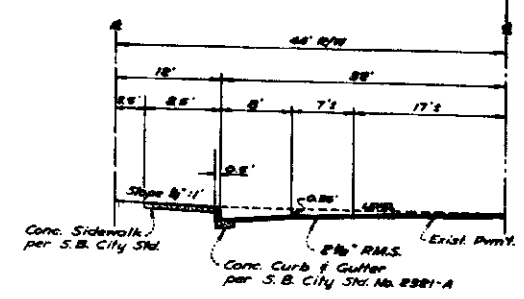
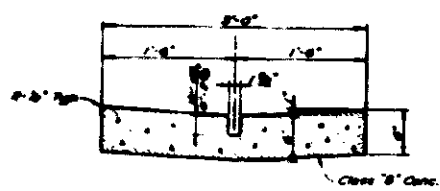


- NOTES:**
- All work embodied on these Plans shall be done in conformity with applicable provisions of Specifications No. 227.
 - All standard Cross Sections of curb, gutter and pavement are as per City of San Bernardino, Department of Engineering Std Drawings No. 2381.
 - Bench Marks:
 - Screw in curb @ N.W. Cor. Holly Dr. & Richardson Ave. - Elev. 1054.07
 - N.F. on E. X. St., 475' N. & Grant Ave., City Aerial Target - Elev. 1040.50
 - Excess dirt from Grant Ave. will be used to fill abandoned reservoir, 200' Rt. of Sta. 12+50 at Grant Ave. Fill dirt will be placed, compacted and finished in a workmanlike manner.



Typical Street Section
GRANT AVE. - Sta. 11+89.45 to 8162.49



Typ. Sect. - Cross Gutter
GRANT AVE. @ Sta. 7179

REVISION 1-4-63 - Added Sht. No. 3 and note No. 6
APPROVED: <i>[Signature]</i> R.C.E. No. 12,442 San Bernardino City Engineer Date Feb. 25, 1963
REVISION 7-17-61 - Added Curb Returns @ Entrance to Parking Lot
APPROVED: <i>[Signature]</i> R.C.E. No. 12,442 San Bernardino City Engineer, A.E.C. Date July 18, 1961
REVISION 5-23-61 - Changed size and location of sidewalk.
APPROVED: <i>[Signature]</i> R.C.E. No. 2879 City Engineer San Bernardino Date May 25, 1961
CITY OF COLTON APPROVED BY: <i>[Signature]</i> CITY ENGINEER
R.C.E. No. 7019 DATE 7/1 April 1961
CITY OF SAN BERNARDINO
IMPROVEMENT PLANS GRANT AVENUE